

Legend

AAA Travel Information

On Map:

- Construction
- Scenic Byway

Details:

- Construction Info
- Bridge and Ferry Info
- Strict Speed Enforcement Info
- Advisory
- See detailed Scenic Information after the last Map/Directions page

- Trip Origin
- Trip Destination
- Stopover
- Controlled Access
- Toll
- Primary
- Secondary
- Local
- Unpaved
- Tunnel
- Ferry, Auto
- Ferry, Passenger

- Interstate
- TransCanadian Hwy
- Canadian Autoroute
- US Highway
- State/Provincial Route
- Rest Area with facilities
- Rest Area without facilities
- Service Plaza
- Welcome Center
- Exit Number
- Exit Number
- Gas, Food, Lodging
- AAA Approved Restaurants/Lodging

©2016 AAA, GOOGLE

These directions are provided solely as a guideline. No representation is made or warranty given as to their content, route, practicability or efficiency. User assumes all risk of use. AAA and its suppliers assume no responsibility for any loss or delay from use.

From: **McDonald's, Corinth Road, Queensbury, NY, United States**
 To: **McDonald's, Corinth Road, Queensbury, NY, United States**
 Total Distance: **63.9 miles (102.8km)**
 Total Estimated Time: **1 hr., 38 mins.**

Directions

McDonald's, Corinth Road, Queensbury, NY, United States to Four Corners Diner, Northville Road, Northville, NY, United States

Distance: 32.0 miles (51.5km) Time: 0 hrs., 53mins.

1. Head north toward Corinth Rd - Drive for a short distance.
2. Turn right onto Corinth Rd - Drive for 0.4 miles.
3. Turn right onto Minnesota Ave - Drive for 0.4 miles.
4. Turn left onto Luzerne Rd - Drive for 3.4 miles.
5. Continue onto Glens Falls Mountain Rd - Drive for 3.9 miles.
6. Turn right onto E River Dr - Drive for 2.1 miles.
7. Continue onto Bay Rd - Drive for 0.5 miles.
8. Turn left onto Bridge St - Drive for a short distance.
9. Continue onto Rockwell St - Drive for 0.6 miles.
10. Continue onto N Shore Rd - Drive for 20.5 miles.
11. Turn right onto Northville Rd Destination will be on the right - Drive for a short distance.

Four Corners Diner, Northville Road, Northville, NY, United States to McDonald's, Corinth Road, Queensbury, NY, United States

Distance: 31.9 miles (51.3km) Time: 0 hrs., 46mins.

12. Head east on Northville Rd toward Sinclair Rd - Drive for 1.2 miles.
13. Turn left onto S Shore Rd - Drive for 15.7 miles.
14. Slight right onto Mt Anthony Rd - Drive for a short distance.

(continued on next page)

(continued from previous page)

15. Continue straight onto Antone Rd - Drive for a short distance.
16. Continue onto Antone Mt Rd - Drive for 0.4 miles.
17. Continue onto Antone Rd - Drive for 2.8 miles.
18. Turn right onto NY-9N S - Drive for 1.5 miles.
19. Turn left onto River St - Drive for 0.6 miles.
20. Turn right onto Call St - Drive for 5.4 miles.
21. Continue onto Corinth Road - Drive for 1.1 miles.
22. Continue onto Corinth Rd - Drive for 3.0 miles.
23. Turn left - Drive for a short distance.
24. Slight left Destination will be on the left - Drive for a short distance.



Directions

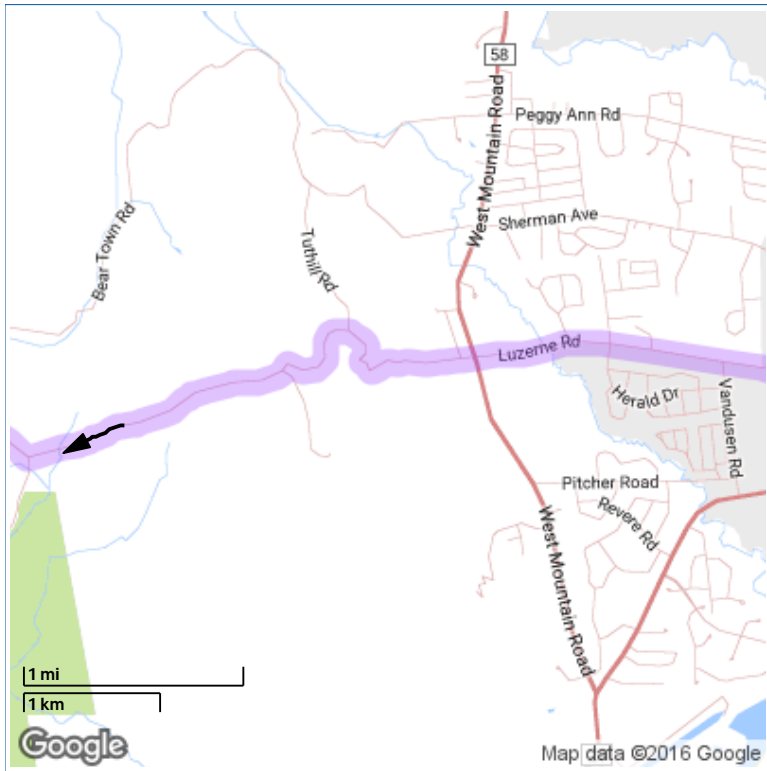
McDonald's, Corinth Road, Queensbury, NY, United States to Four Corners Diner, Northville Road, Northville, NY, United States

Total Distance: 32.0 miles (51.5km)

Time: 0 hrs., 53mins.

Traveled on This Map: 1.9 miles (3.1km)

1. Head north toward Corinth Rd - Drive for a short distance.
2. Turn right onto Corinth Rd - Drive for 0.4 miles.
3. Turn right onto Minnesota Ave - Drive for 0.4 miles.
4. Turn left onto Luzerne Rd - Drive for 3.4 miles.



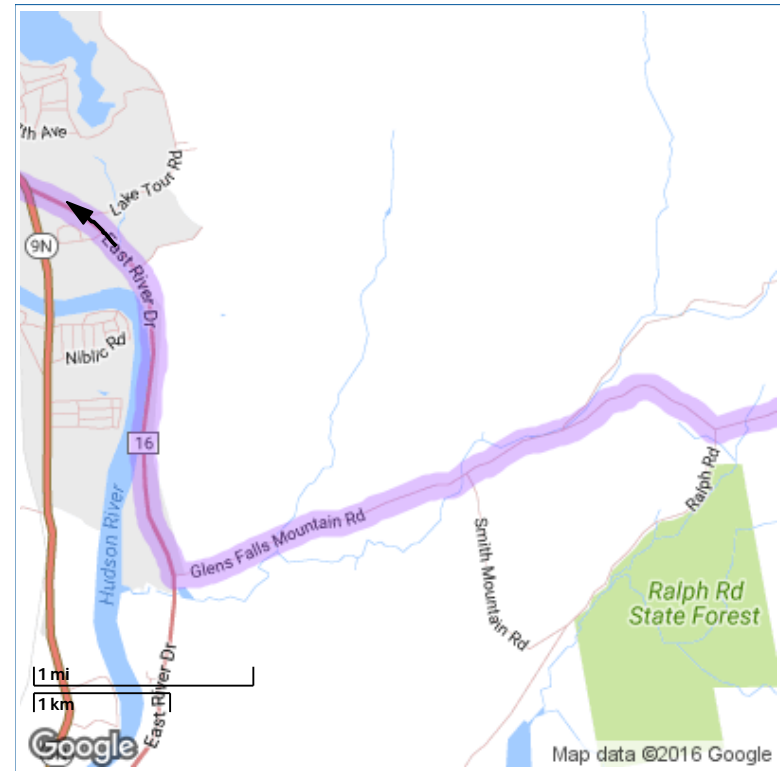
Directions

Continuing to Four Corners Diner, Northville Road, Northville, NY, United States

Remaining Distance: 30.1 miles (48.4km)

Traveled on This Map: 3.5 miles (5.6km)

5. Continue onto Glens Falls Mountain Rd - Drive for 3.9 miles.



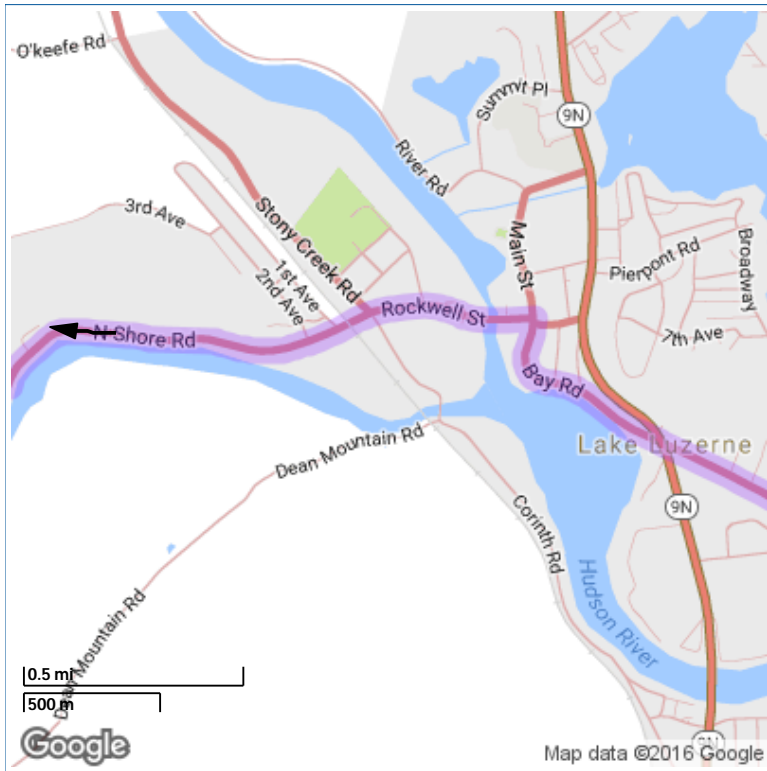
Directions

Continuing to Four Corners Diner, Northville Road, Northville, NY, United States

Remaining Distance: 26.6 miles (42.8km)

Traveled on This Map: 4.8 miles (7.7km)

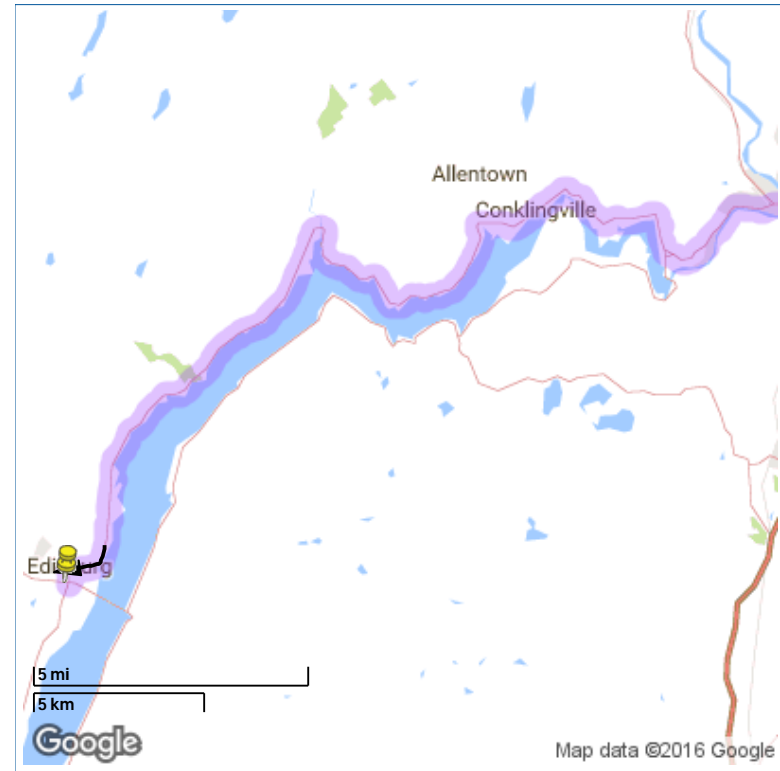
6. Turn right onto E River Dr - Drive for 2.1 miles.



Directions
Continuing to Four Corners Diner, Northville Road, Northville, NY, United States

Remaining Distance: 21.8 miles (35.1km)
 Traveled on This Map: 1.8 miles (2.9km)

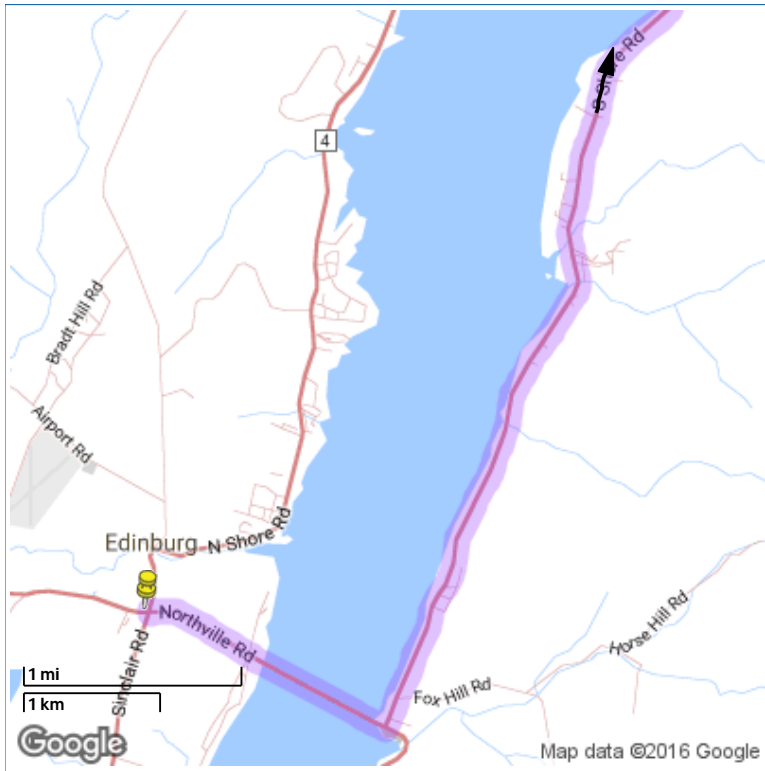
7. Continue onto Bay Rd - Drive for 0.5 miles.
8. Turn left onto Bridge St - Drive for a short distance.
9. Continue onto Rockwell St - Drive for 0.6 miles.
10. Continue onto N Shore Rd - Drive for 20.5 miles.



Directions
Continuing to Four Corners Diner, Northville Road, Northville, NY, United States

Remaining Distance: 20.0 miles (32.2km)
 Traveled on This Map: 20.0 miles (32.2km)

11. Turn right onto Northville Rd Destination will be on the right - Drive for a short distance.



Directions

Four Corners Diner, Northville Road, Northville, NY, United States to McDonald's, Corinth Road, Queensbury, NY, United States

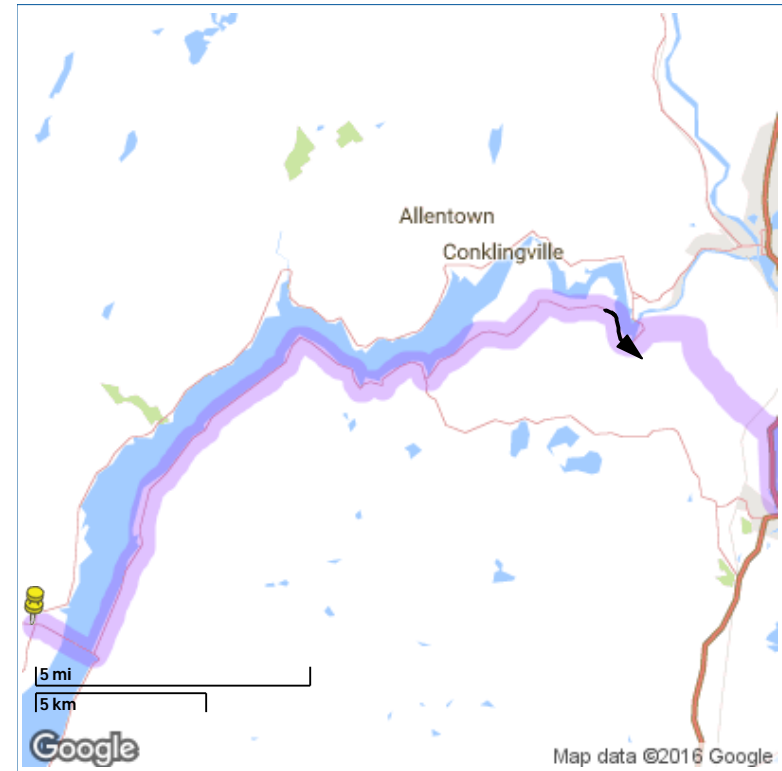
Total Distance: 31.9 miles (51.3km)

Time: 0 hrs., 46mins.

Traveled on This Map: 4.6 miles (7.4km)

12. Head east on Northville Rd toward Sinclair Rd - Drive for 1.2 miles.

13. Turn left onto S Shore Rd - Drive for 15.7 miles.



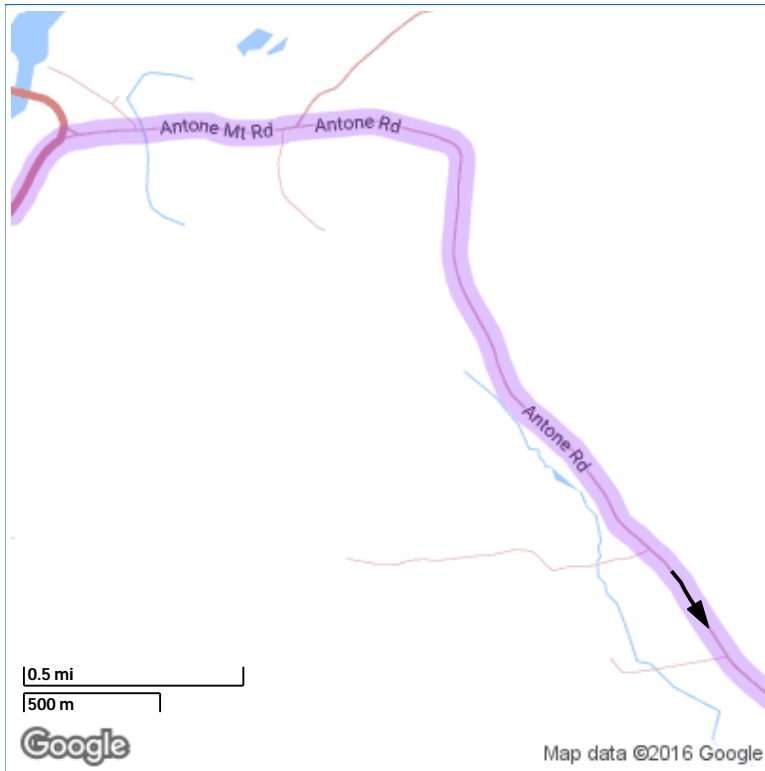
Directions

Continuing to McDonald's, Corinth Road, Queensbury, NY, United States

Remaining Distance: 27.3 miles (43.9km)

Traveled on This Map: 12.3 miles (19.8km)

13a. Continue on S Shore Rd



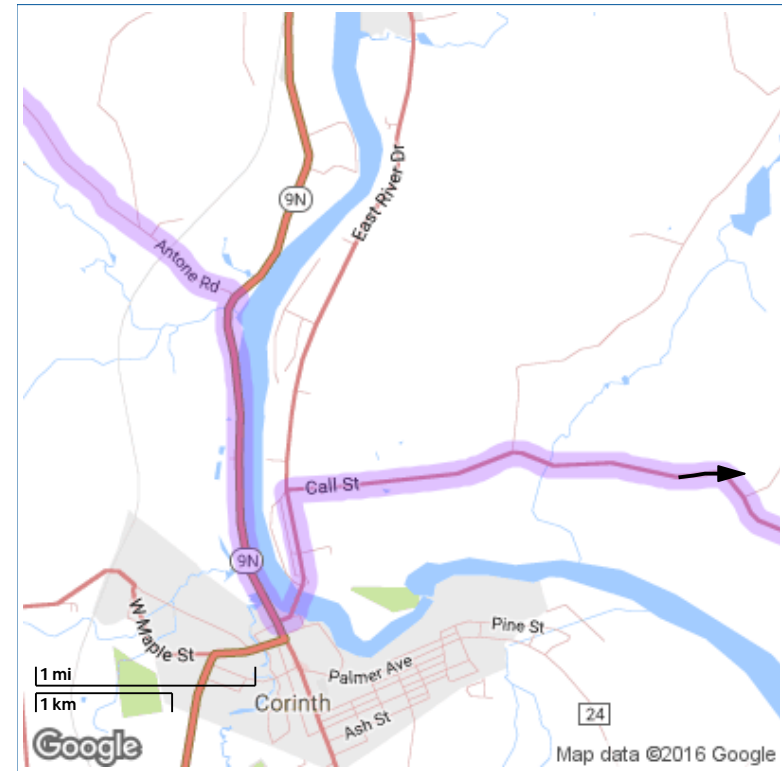
Directions

Continuing to McDonald's, Corinth Road, Queensbury, NY, United States

Remaining Distance: 15.1 miles (24.3km)

Traveled on This Map: 2.3 miles (3.7km)

- 14. Slight right onto Mt Anthony Rd - Drive for a short distance.
- 15. Continue straight onto Antone Rd - Drive for a short distance.
- 16. Continue onto Antone Mt Rd - Drive for 0.4 miles.
- 17. Continue onto Antone Rd - Drive for 2.8 miles.



Directions

Continuing to McDonald's, Corinth Road, Queensbury, NY, United States

Remaining Distance: 12.7 miles (20.4km)

Traveled on This Map: 5.4 miles (8.7km)

- 18. Turn right onto NY-9N S - Drive for 1.5 miles.
- 19. Turn left onto River St - Drive for 0.6 miles.
- 20. Turn right onto Call St - Drive for 5.4 miles.



Directions
Continuing to McDonald's, Corinth Road, Queensbury, NY, United States

Remaining Distance: 7.3 miles (11.7km)
 Traveled on This Map: 3.9 miles (6.3km)

21. Continue onto Corinth Road - Drive for 1.1 miles.



Directions
Continuing to McDonald's, Corinth Road, Queensbury, NY, United States

Remaining Distance: 3.4 miles (5.5km)
 Traveled on This Map: 3.4 miles (5.5km)

22. Continue onto Corinth Rd - Drive for 3.0 miles.

23. Turn left - Drive for a short distance.

24. Slight left Destination will be on the left - Drive for a short distance.